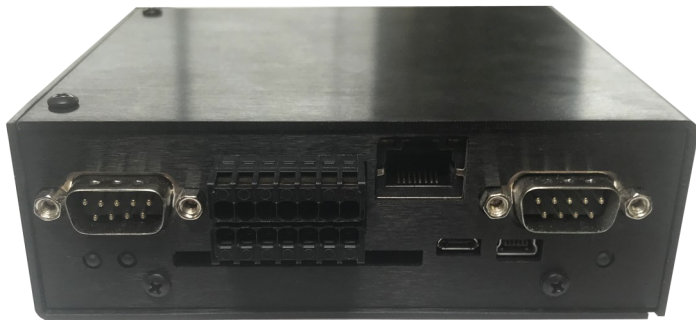
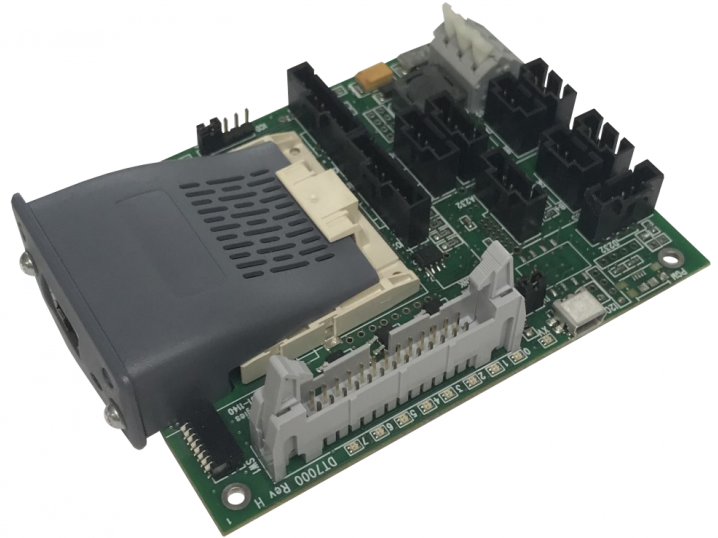


Product Overview

DT7000 Gateway and Controller Module

The DT7000 family of Gateway I/O modules provides Digital Input, Digital Output, Analog Input, Analog Output, multiple serial channels, Ethernet, and support for all major industrial Fieldbus networks. The DT7000 programmable gateway I/O allows OEM equipment suppliers to easily bridge multiple serial devices into a machine's main controller or Fieldbus network and easily add additional I/O. Gateways can be used to bring serial barcode readers, for example, onto a system's TCP/IP ethernet network.



The DT7000 is fully user C programmable. This allows the gateway to act as a controller running user programmed logic. The DT7000 is perfectly suited for small machine or subsystem control.

Applications



The DT7000 can be used in various applications including the following:

- OEM Machines
- Communication Gateway for power transfer systems
- Autonomous Vehicle Systems
- Weigh scales
- Paper Processing Equipment
- Baggage and Material handling systems

Technical Specifications

PHYSICAL CHARACTERISTICS

DIMENSIONS L: 4.24" / 0.76cm, W: 3.2" / 8.128cm
WEIGHT 3.6 g / 0.1 oz

INTERFACE

4 SERIAL CHANNELS RS485 (Isolated opt), RS232, Modbus RTU Master or Slave, Baud Rate: 9600 to 384K Configurable

8 DIGITAL OUTPUTS Sourcing or Sinking, 1.5Amp max., Overvoltage, Overtemp Protection, Voltage: 5 to 40 VDC

4 ANALOG OUTPUTS 10 bit, 0-10 Volt or 0 to 20mA, Optional signal conditioning, Resolution: 10 bit., Accuracy: +/- 3 LSB

8 ANALOG INPUTS 10 bit, 0-10 Volt, or 0 to 20mA, Optical signal conditioning Resolution: 10bit., Accuracy: +/- 3 LSB

PROGRAMMABLE USB connection, C Programming

USB CHANNEL Diagnostic/Configuration, USB Version 2.0

OPTIONAL Ethernet, Wireless - BlueTooth, Wifi

ELECTRICAL

INPUT CURRENT 300mA max, (100mA typ. (@24VDC))
INPUT VOLTAGE 9 - 40 VDC (24 VDC Nominal)

ENVIRONMENTAL

TEMPERATURE Operating: 0 to 70 °C / 32 to 158°F

CERTIFICATIONS

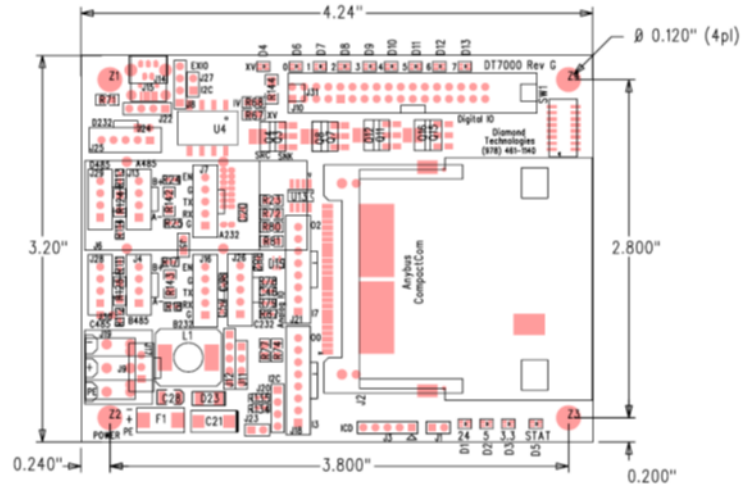
ENVIRONMENTAL SAFETY IEC, UL
SAFTEY ROHS Compliant

NETWORKING

NETWORKS SUPPORTED BACnet IP, BACnet MSTP, Bluetooth, CANopen, CC-Link, ControlNet, DeviceNet, EtherCat, Ethernet/IP, Modbus-RTU, Modbus-TCP, Profibus, Profinet

WARRANTY

WARRANTY 12-Month Factory Warranty



DT7000	A	B	C	D	E
	Serial / Ethernet	Digital I/O (8 in, 8 out)	Networks	Analog I/O	Options
	A - 4 Serial Channels (RS232 or RS485)	0 - Sinking Inputs and Outputs	TCP - Modbus TCP	(8 in, 4 out)	blank - None
	B - 4 Serial Channels (RS232 only)	1 - Sourcing Inputs and Outputs	RTU - Modbus RTU	A - 0-10 VDC	001 - Terminal Blocks (Up to 96 I/Os)
	C - 4 Serial Channels (RS232 or Isolated RS485)	X - Custom configuration	PNT - Profinet	B - 0-5 VDC	EM - Enclosure, metal
	D - 2 Serial Channels (RS232 only)		PB - Profibus	C - 0-20 mA	EMD - Enclosure, metal, DIN rail mtg
	E - Ethernet plus 3 Serial Channels (1- RS232, 2-RS232/485)		EIP - EtherNet IP		BT - Wireless, Bluetooth
	Q - Custom, please contact the factory		ECT - EtherCat		WF - Wireless, Wifi
			DN - DeviceNet		9xx - Custom
			COP - CANOpen		
			CNT - ControlNet		
			CCL - CC-Link		
			blank - None		

Example: DT7000A1-PB-A
 DT7000 with 4 serial channels, 16 sourcing inputs/outputs, Profibus support with 12 analog inputs/outputs (0-10VDC)