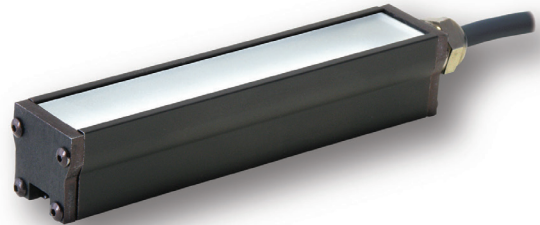





### Product Highlights

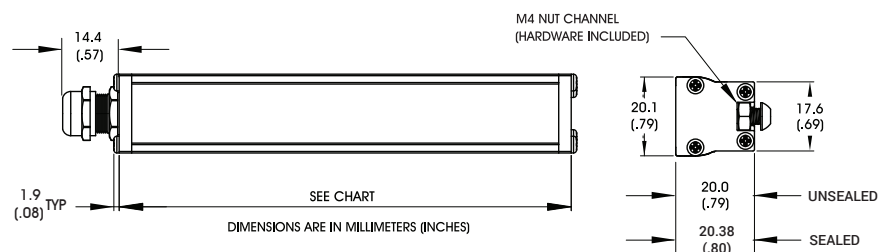
- High intensity light in a small package - Only 20.1 mm (.79") wide
- Best suited for close-up inspection (working distance of < 300mm (12"))
- Expandable in 2" increments from 2" to 40"
- Washdown version available
- Very diffuse illumination
- Broad range of wavelengths available



### General Specifications

Electrical Specifications	Color	24v Current	All Other Controls
	365, 375, 385, 395, 405	0.12A per 2 inch	0.06A Max per 2 inch
	455, 470, 530, WHI	0.12A per 2 inch	0.08A Max per 2 inch
	590, 625	0.12A per 2 inch	0.10A Max per 2 inch
	850, 940	0.12A per 2 inch	0.12A Max per 2 inch
Normal Operating Temperature	0 - 60°C		
Weight (g)	Per 4" (Sealed) 68.04g (2.4oz) (Nonsealed) 63.50mm (2.24oz)		
Standard Cable Information	Up to 2 meters (80") long - 105°C rated PVC jacket, foil shield with drain.		
Photobiological Risk Factor IEC 62471	<b>Exempt Applicable Wavelengths:</b> 850, 940 <b>Group 1 (Low-Risk) Applicable Wavelengths:</b> 455, 470, 530, 590, 625, WHI <b>Group 2 (Moderate Risk) Applicable Wavelengths:</b> 365, 375, 385, 395, 405		
Compliance	  		
IP Rating	IP65 Sealed, IP50 Unsealed		
Lumen Maintenance	L70 = 50,000 hours		

## Mechanical Specifications



Non Washdown		Non Washdown		Washdown Option		Washdown Option	
Part #	Length in mm (inches)	Part #	Length in mm (inches)	Part #	Length in mm (inches)	Part #	Length in mm (inches)
AL12602	64.0 (2.52)	AL12622	572.0 (22.52)	AL12602	66.6 (2.62)	AL12622	574.6 (22.62)
AL126 <sup>1</sup>	114.8 (4.52)	AL12624	622.8 (24.52)	AL126 <sup>1</sup>	117.4 (4.62)	AL12624	625.3 (24.62)
AL12606	165.6 (6.52)	AL12626	673.6 (26.52)	AL12606	168.2 (6.62)	AL12626	676.1 (26.62)
AL12608	216.4 (8.52)	AL12628	724.4 (28.52)	AL12608	219.0 (8.62)	AL12628	726.9 (28.62)
AL12610	267.2 (10.52)	AL12630	775.2 (30.52)	AL12610	269.8 (10.62)	AL12630	777.7 (30.62)
AL12612	318.0 (12.52)	AL12632	826.0 (32.52)	AL12612	320.6 (12.62)	AL12632	828.5 (32.62)
AL12614	368.8 (14.52)	AL12634	876.8 (34.52)	AL12614	371.4 (14.62)	AL12634	879.3 (34.62)
AL12616	419.6 (16.52)	AL12636	927.6 (36.52)	AL12616	422.2 (16.62)	AL12636	930.1 (36.62)
AL12618	470.4 (18.52)	AL12638	978.4 (38.52)	AL12618	473.0 (18.62)	AL12638	980.9 (38.62)
AL12620	521.2 (20.52)	AL12640	1029.2 (40.52)	AL12620	523.8 (20.62)	AL12640	1031.7 (40.62)

<sup>1</sup> AL126 does not require a two digit suffix to represent this length.

## Part Number Key

Model	Illuminated Length	—	Spectral Wavelength	Connector/Control	Wash Down Option	Optional Light Conditioning	—	Alternative Connector
AL126	XX	—	XXX	XX	X	X	—	XXX
AL126	(2" increments from 2" to "40)		(UV) 365 <sup>3</sup> (UV) 375 <sup>3</sup> (UV) 385 <sup>3</sup> (UV) 395 <sup>3</sup> (UV) 405 (royal blue) 455 (blue) 470 (green) 530 (amber) 590 (red orange) 625 (infra-red) 850 (infra-red) 940 (white) WHI	C1 C5 IC I3 I3S 24	W	D (diffuser) P <sup>2</sup> (polarizer)		M12 <sup>1</sup>
Ex: AL12602-WHIIC AL12618-625C5W					<sup>1</sup> Available with IC, I3, I3S and 24v options only <sup>2</sup> Not available with washdown option (blue) 470 will reduce the life of the polarizer <sup>3</sup> Not available with diffuser or polarizer option			

**Stock Product:** shipped within 3 days    **Build to Order:** shipped within two weeks

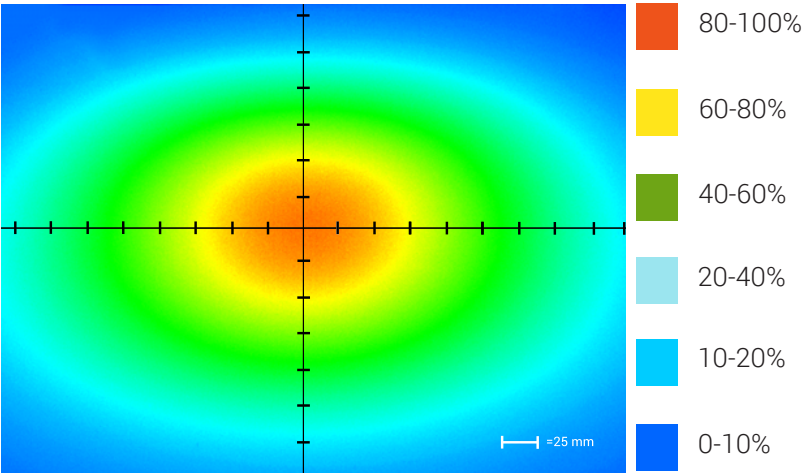
AL126-WHIIC

## Connector | Control Options

C1 Connector	C5 Connector	ICS 2 (IC)	ICS 3 (I3)	ICS 3S (I3S)	24
For use with: DCS Series Controllers	For use with: Pulsar 320 Strobe Controller.	Continuous in-line controller  Powered with: 24V power supply	Combination strobe/continuous in-line controller  Powered with: 24V power supply	Default-OFF strobe/continuous in-line controller  Powered with: 24V power supply	Flying/tinned leads  Powered with: 24V power supply

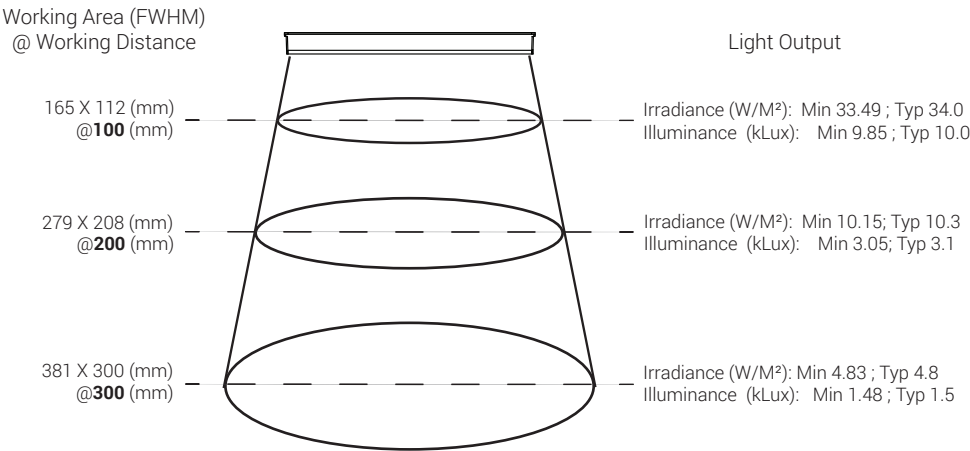
Optical Performance

Intensity Distribution



Optical measurement taken using AL126-WHIC Rev. A @ 200 mm

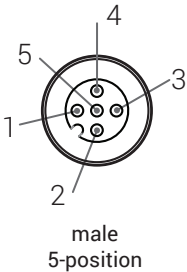
Area of Illuminance & Intensity



Operation and Wiring

ICS 2 (IC)			ICS 3 (I3 and I3S)			24 Volt		
Pin (M12)	Function	Wire Color	Pin (M12)	Function	Wire Color	Pin (M12)	Function	Wire Color
1	+24 VDC	Brown	1	+24 VDC	Brown	1	+24 VDC	Brown
2	0-10 VDC Analog Control	White	2	Reserved	White	2	N/A	White
3	GND	Blue	3	GND	Blue	3	-24 VDC	Blue
4	GLO	Black	4	PNP/Active High Trigger	Black	4	N/A	Black
5	N/A	Gray	5	0-10 VDC Analog Control	Gray	5	N/A	Gray

Optional M12 Pinout



## Warranty Information

Every Advanced illumination, Inc. (Ai) product is thoroughly inspected and tested before leaving the factory. Products are warranted to be free of defects in workmanship and materials for a period of two years from the original date of purchase. Should a defect develop during this period, please contact Ai Customer Service or your Ai distributor for a Return Merchandise Authorization (RMA), and return the complete product, freight prepaid, to Ai. If a defect is found, Ai will - at our discretion - repair or replace the product without charge. Ai claims no liability for any implied warranties, including "merchantability" and "fitness for a specific purpose."

## Electromagnetic Compatibility

This product was tested and complies with the regulatory requirements and limits for electromagnetic compatibility (EMC) as stated in the product specifications. These requirements and limits are designed to provide reasonable protection against harmful interference only when the product is operated in its intended industrial electromagnetic environment. To minimize the potential for electromagnetic interference or unacceptable performance degradation, install and use this product in strict accordance with the instructions in the product documentation.

## Customer Service

For information on existing orders, or to make an order adjustment, contact us Monday through Friday 8:00 am to 5:00 pm, EST or send an email to [orders@advill.com](mailto:orders@advill.com).

## Company Information

### Advanced Illumination

440 State Garage Road, Rochester VT. 05767

Phone: 802.767.3830

Fax: 802.767.3831

Email: [info@advancedillumination.com](mailto:info@advancedillumination.com)

Web: [advancedillumination.com](http://advancedillumination.com)

© 2015 Advanced Illumination Inc. All rights reserved