

IoT Platforms, Webservers, Communication Gateways,

and Software Solutions

For over 20 years **Diamond Technologies** has provided Data Collection Solutions that integrate our OEM customers' devices, machines, and systems into their end customers communication and Cloud infrastructure.

Our embedded communications modules, communication gateways, embedded webservers, and IoT platform solutions allow our customers to easily connect their systems to collect, monitor and analyze critical data.

Whether the goal is to interface a device into a industrial communication network, remotely access a machine for program changes and customer support, or gather data for analytics and process improvement **Diamond Technologies** has a range of products and the engineering expertise to assist you in meeting your customers' requirements.

Our products are designed to provide accurate data, reliability, and easy integration. Our Design and Customer support engineering team can assist you in quickly assessing the best solution and integration method to meet your schedule and system requirements.



Diamond Technologies IoT solutions allow packaging manufactures to remotely monitor machines and support customers anywhere anytime. Gateways facilitate predictive maintenance and analytical use of collected data significantly increases machine efficiency and reduces downtime.

Diamond Technologies communication gateways and embedded modules allow OEM equipment manufacturers to link their systems to all Industrial communication protocols.



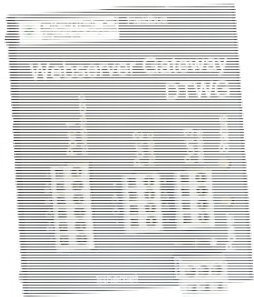
Diesel Generators provide 24/7 backup power to critical applications such as hospitals, data centers, and financial institutions. **Diamond Technologies** Webservers provide 24/7 monitoring, alarming, and remote testing of these critical infrastructure systems.

Product Offering

Diamond Technologies has a wide range of embedded communications modules, communication gateways, embedded webservers, and IoT platform solutions for Data Collection. The table below provides examples of some of the most popular solutions. See www.diamondt.com for additional solutions.



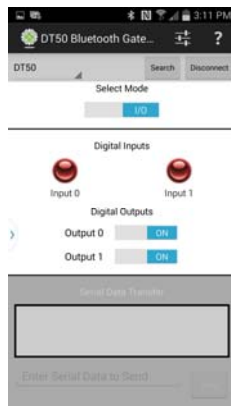
DT7000 Embedded Gateway, Digital and Analog I/O, Serial Communications, Support for most major industrial communication protocols, embedded user C programming environment, IoT platform.



DTWG Webserver Gateway, integrated communications gateway for Kohler Diesel Generators and other Electrical Transfer switches, customizable.



DT9000 IoT platform for machine data collection, integrated DRAP remote programming software, Integrated drivers for various industrial protocols. Windows programming environment.



DT50 Serial to Bluetooth gateways, optional Bluetooth I/O, support for Bluetooth 2.1 and 4.0, Integrated applications for iOS, Android, and Windows, Industrial with long range 1000m models.



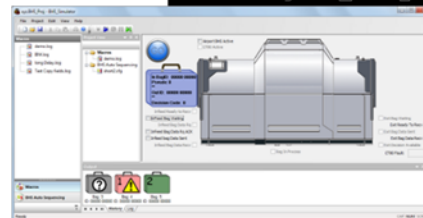
B40 and M40 Embedded industrial communications modules support most major industrial networks, device and machine level interfaces.



USB-CAN gateways DB-9 and RJ45 models, PCI interface versions, industrial and Automotive, common Windows Driver interface, CAN to Ethernet models.



CANblue CAN to Bluetooth gateway for medical devices, automotive interfaces.



Integrated Software Integrated software solutions for Windows, Android and iOS platforms.