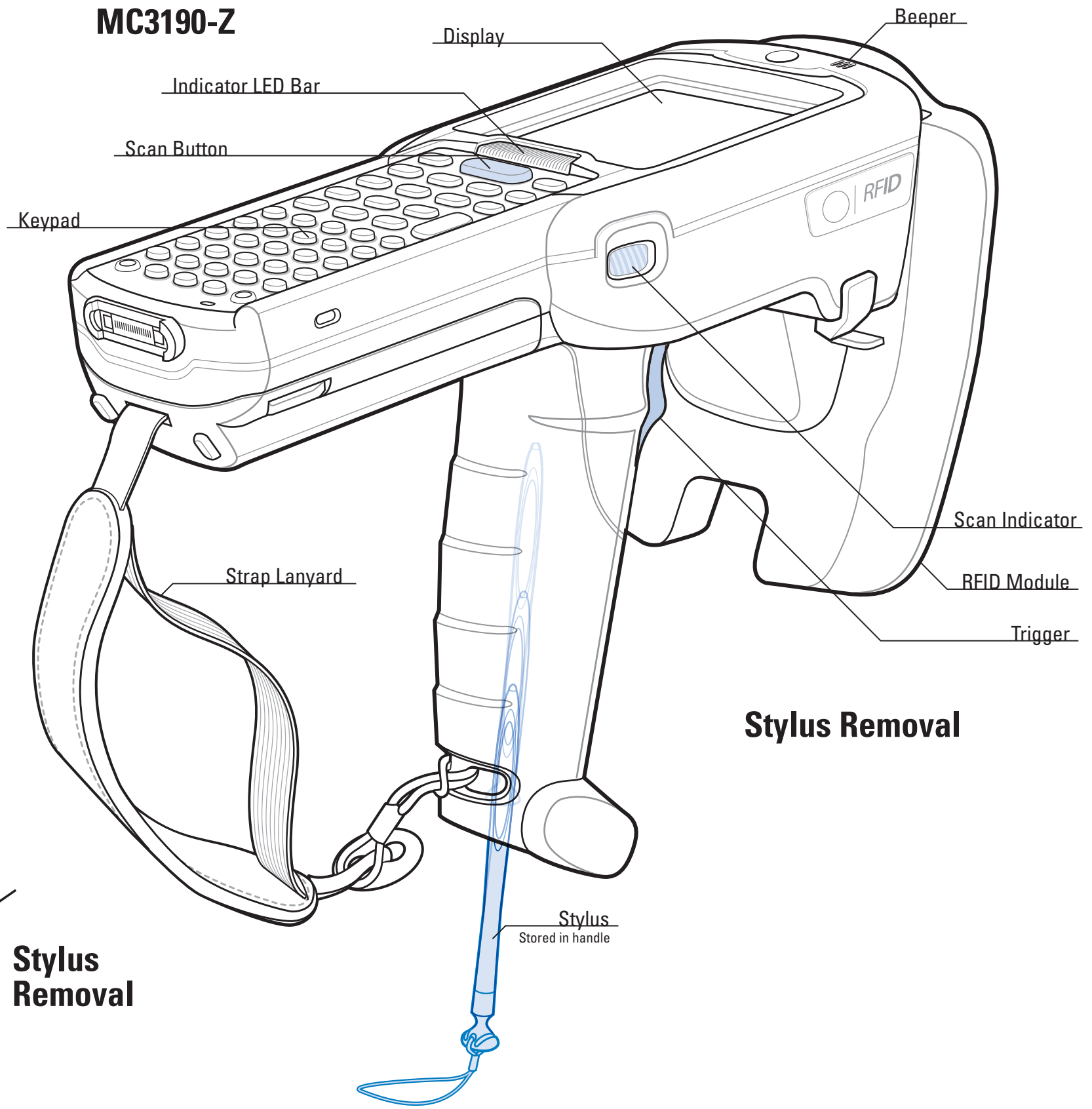
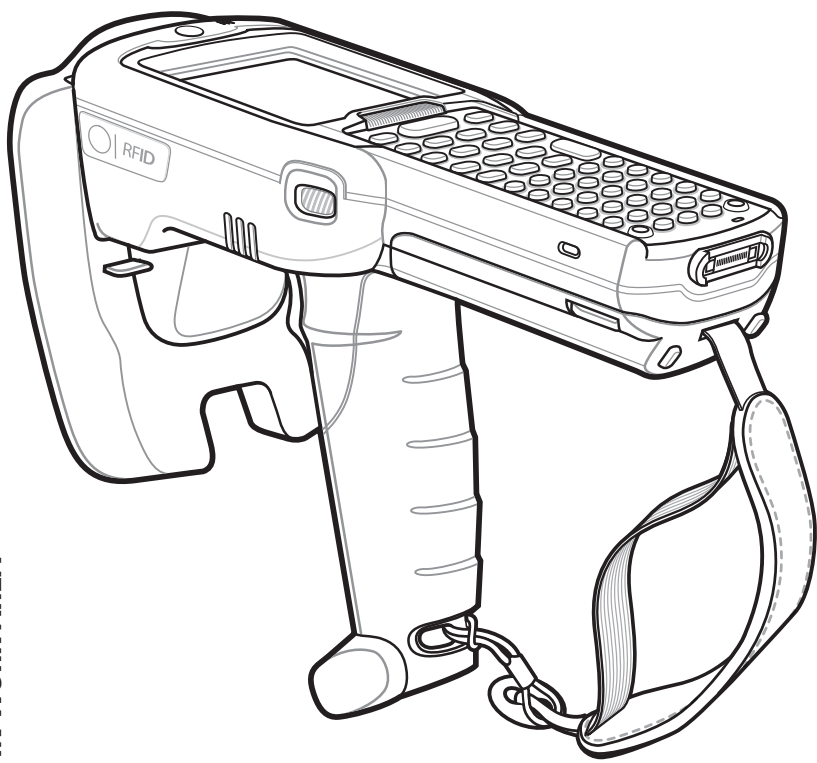


# MC3190-Z

## Quick Start Guide

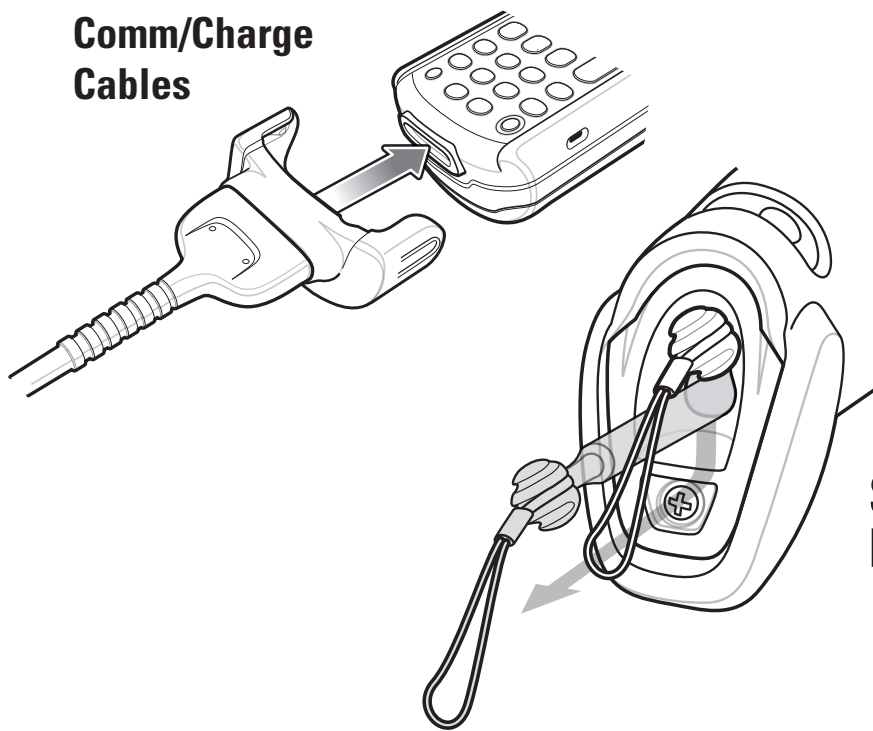
<http://www.zebra.com/mc3190z>  
See User Guide for more information

### FEATURES



POST IN WORK AREA

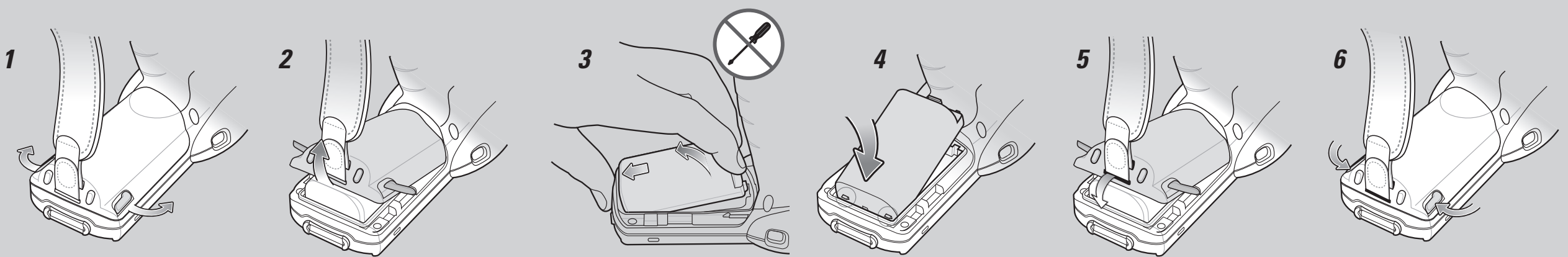
#### Comm/Charge Cables



#### Stylus Removal

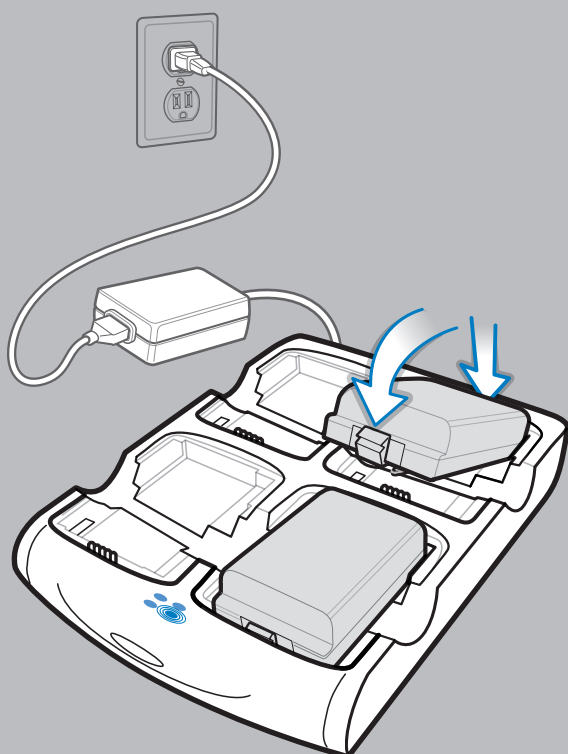
#### Stylus Removal

### BATTERY REMOVAL/INSTALLATION



### CHARGING INSTRUCTIONS

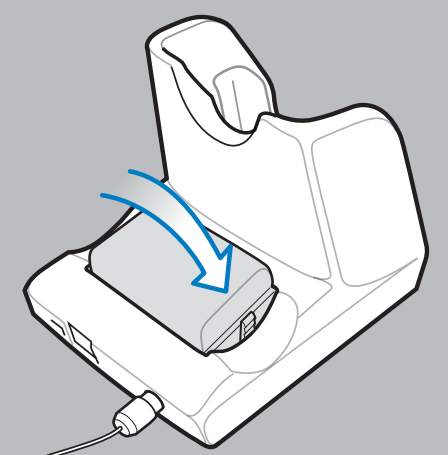
⦿ = LED Indicator Location | Slow Flash = Normal Charge | Solid Amber = Full Charge | Fast Flash = Charging Error



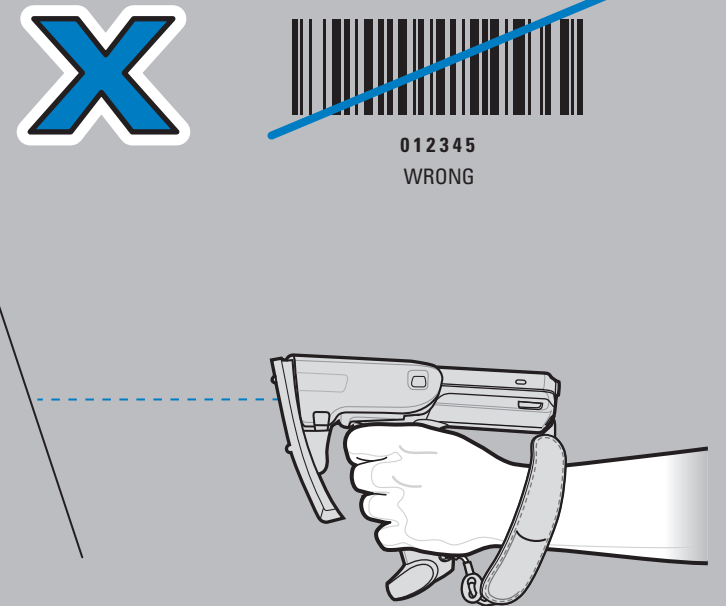
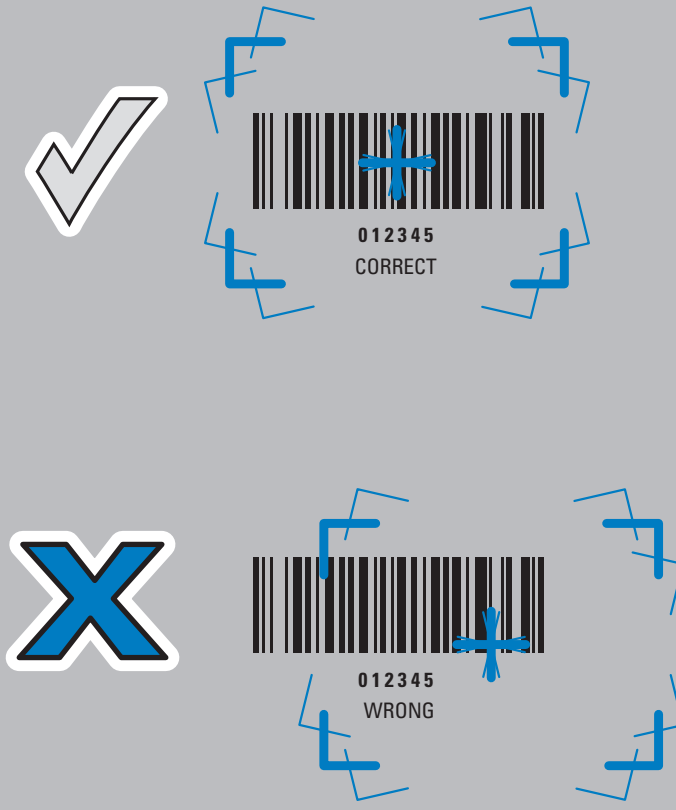
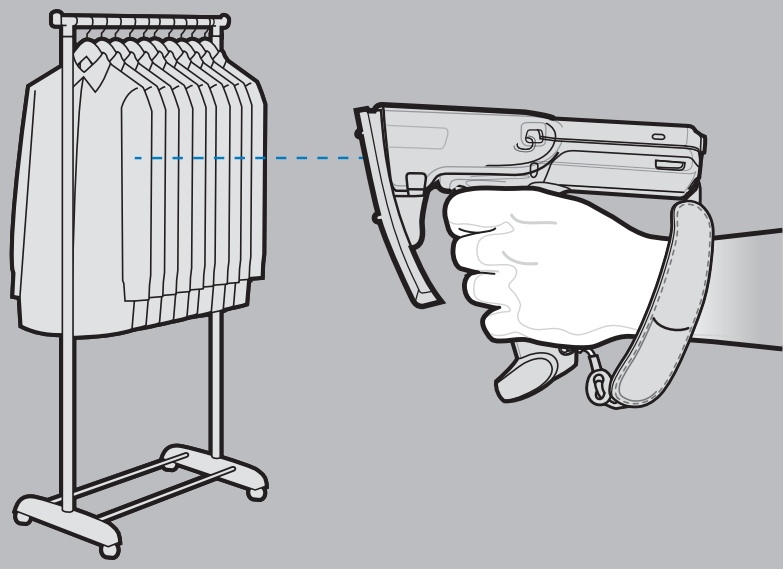
Four Slot Spare Battery Charger



Single Slot Serial Cradle

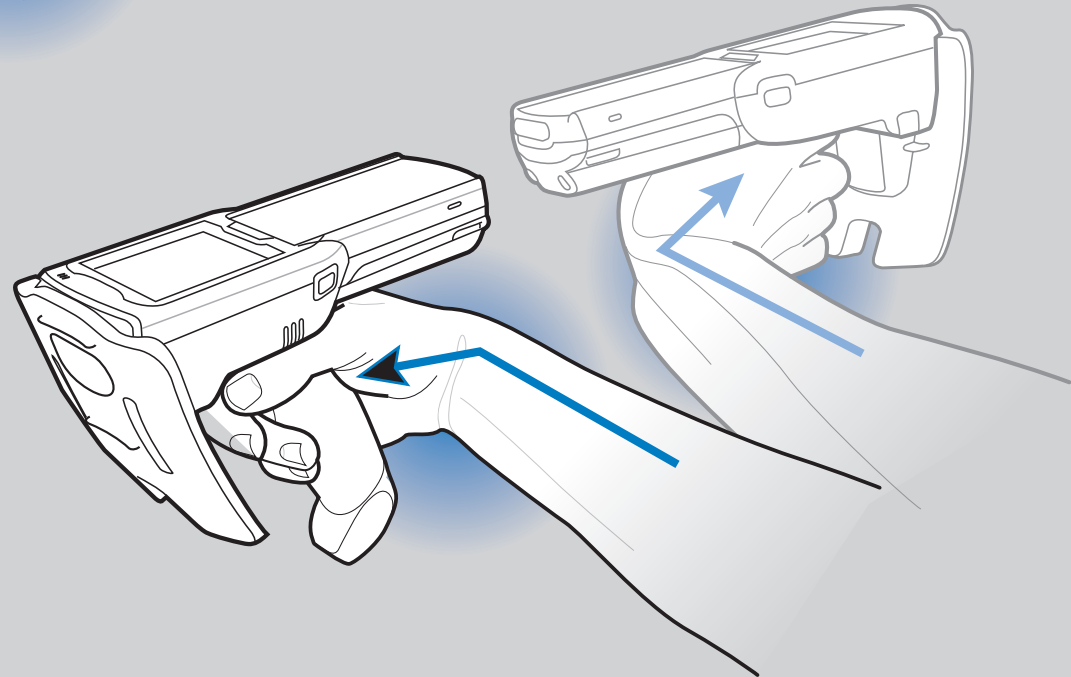
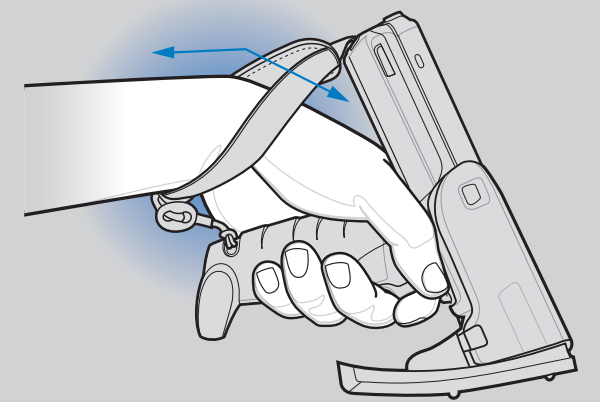
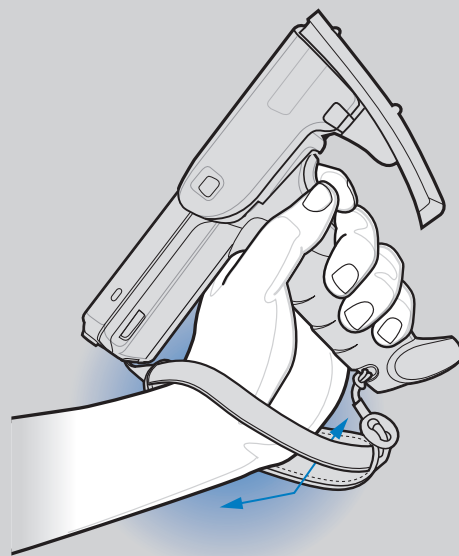


# OPTIMUM RFID TAG DECODING



ALTERNATE LEFT AND RIGHT HANDS  
TAKING BREAKS AND TASK ROTATION RECOMMENDED

# OPTIMUM UPRIGHT BODY POSTURES

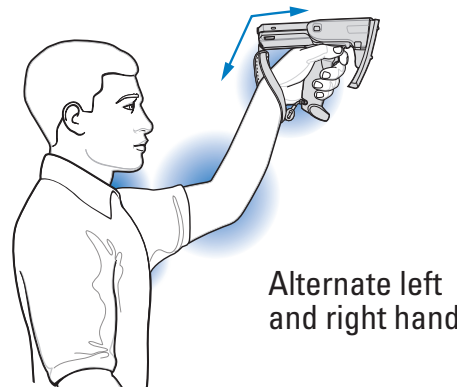


# AVOID EXTREME WRIST ANGLES

# OPTIMUM BODY POSTURE

## Optimum Body Posture for Low Scanning

Alternate left and right knees



## Optimum Body Posture for High Scanning



Taking breaks and task rotation recommended

Local Contact: \_\_\_\_\_