



 **Anybus<sup>®</sup>** Gateways

Industrial networking made easy™



**Anybus gateways:** *Industrial networking made easy™*



## Connect across borders

In the world of industrial automation, there are many different networks available. This is challenging for device manufacturers, machine builders, system integrators and end users who need to connect different machines and networks which do not speak the same language.

Anybus gateways offer quick and easy network integration by acting as translators between industrial networks and industrial devices.

With more than 300 unique gateway versions to choose from, there are solutions for any type of connectivity issue, whether it is network-to-network or device-to-network.



## Connect. Configure. Done!

With Anybus gateways, you interconnect industrial devices and networks within minutes.

## Why Anybus gateways?

### FAST

Anybus gateways are by far the fastest way to achieve connectivity between networks and devices. HMS's deep network experience is incorporated into each gateway. This is time you save compared to developing connectivity yourself.

### EASY

You set up the network connection with the included software (Anybus Configuration Manager). No programming is needed and you are up and running within minutes.

### PROVEN AND TRUSTED

Millions of devices are connected to networks via Anybus technology. Anybus gateways have successfully connected devices, machines and networks for more than 20 years and are widely used together with automation products and systems from major industrial companies such as Rockwell Automation, Siemens, Schneider Electric, Mitsubishi etc.



## Solving connectivity problems on the factory floor

### X-GATEWAY<sup>™</sup>



#### Network-to-network connectivity

#### 1 Production line extension

Extend an existing production segment with new machines and new network types.

#### 2 Factory upgrade

The easy way to migrate from fieldbus to industrial Ethernet. Retrofit an old PLC system, and connect it to a newer system, keeping existing I/O modules and wiring infrastructure.

#### 3 PLC to PLC communication

Connect two PLC systems from different brands such as Siemens, Rockwell, Schneider, Mitsubishi, Beckhoff, ABB etc.

#### 4 Segmentation of networks

Divide a network topology into logical segments. Create clear cuts between different parts of the plant, both logical and electrical.

#### 5 Enterprise level integration

Integrate factory floor data with enterprise level systems such as SCADA, SAP, OPC etc. Anybus gateways are included in most of the major PLC manufacturers' system building software making it easy for you to integrate them into your network design.

### COMMUNICATOR<sup>™</sup>



#### Device-to-network connectivity

#### 6 Connect any industrial device

*If you are a system integrator or end user:*  
Select the best devices available for your application needs — regardless of manufacturer or internal protocol.

*If you are a machine builder or device manufacturer:* Make your machinery or device compatible with any industrial network by simply connecting an Anybus gateway — the fastest and easiest way to enter a new market.

#### 7 Enter new segments

Anybus gateways are suitable for a wide range of applications within factories, building, power & energy and infrastructure. For example, you can make building devices such as temperature sensors, energy meters, gas gauges and water meters part of your industrial network. This gives you better control and helps you reduce energy consumption.

#### One gateway family — any network

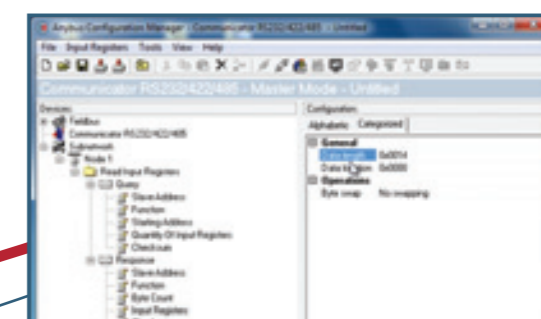


#### Connect. Configure. Done!

No matter which gateway you choose, you configure the network connection in the easy-to-use Anybus Configuration Manager. Simply connect the gateway via USB or Ethernet, create the configuration and you're done!

Markus Bladh  
Product Line Manager,  
Gateways

Solutions, trainings,  
how-to videos, case  
studies, webinars on  
[www.anybus.com/training](http://www.anybus.com/training).



# **Anybus® X-gateways**

## Connect any two industrial networks — fieldbus or industrial Ethernet

Anybus X-gateways help automation engineers to easily interconnect any two networks, enabling a consistent information flow throughout the entire plant. The primary focus is fast transfer of cyclic I/O data between two networks, totally offloading the PLC from working with additional complex calculations.

X-gateways are tested and proven with all leading manufacturers of PLCs such as, Siemens, Allen Bradley, Schneider Electric, Mitsubishi, ABB, Omron, Hitachi, Beckhoff, Pheonix Contact, Bosch Rexroth and more.

### Easy configuration

The connection between the two networks is quickly set up in the Anybus Configuration Manager software which means that no programming is required. Just connect, configure, and you're done.

The Configuration Manager is FDT-based enabling you to include it in your own configuration software. Configuration files like GSD and EDS files are included and also downloadable from anybus.com.



### Anybus X-gateway

- Gateways for conversion between any two networks
- Over 250 versions covering most network combinations
- Easy configuration via a terminal editor software
- Master/slave or slave/slave versions available

### X-gateway CANopen

- Specialized X-gateway for CANopen connectivity
- CANopen master/client to 10 other networks
- Full CANopen master functionality
- Easy configuration via the Anybus Configuration Manager software

### X-gateway Modbus-TCP

- Modbus-TCP master/client to 10 other networks
- Easy, web-based configuration through the Anybus Configuration Manager software
- SD card backup for easy module replacement



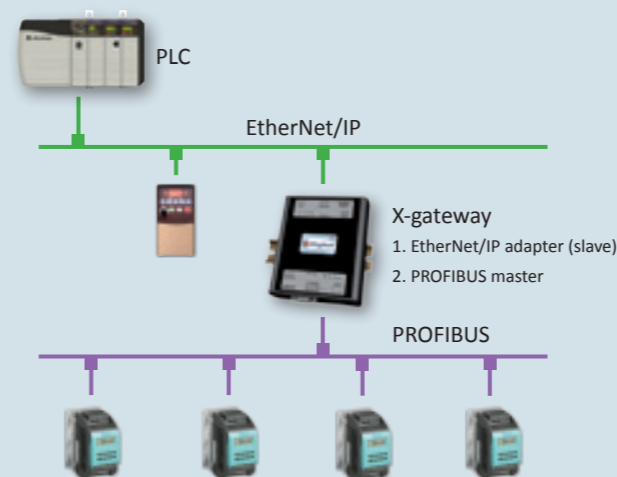
**HMS's Anybus products are very sound, functional and simple to use compared to other similar devices that we tried.**

*Marino Gobita  
SPAMI, Italy*

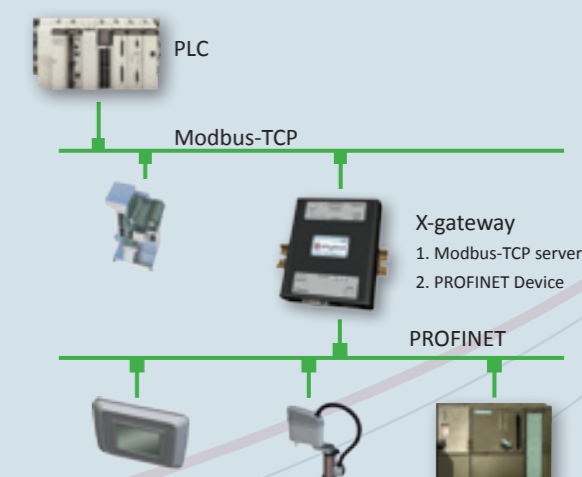
**The Anybus X-gateway is economical, robust, and proven technology.**

*Jeffrey Moore  
Sytech, USA*

#### Example: Distributed network master (master/slave gateway) EtherNet/IP to PROFIBUS



#### Example: PLC to PLC communication (slave/slave gateway) Modbus-TCP to PROFINET



# **Anybus<sup>®</sup> Communicator**

## Connect any device to a fieldbus or industrial Ethernet network

Anybus Communicator is a family of protocol converters that connect devices to all major industrial networks. The Communicator is capable of converting almost any standard or user specific (proprietary) protocol. This means that you do not have to worry about making any hardware or software changes to your device. Simply connect a Communicator and you will be able to connect to any network.

### Easy configuration

You configure your device through the Anybus Configuration Manager software. No programming is required. Just connect, configure, and you're done.



### Communicator RTU

- Protocol converters for devices with Modbus RTU
- Connectivity to 13 different networks
- Modbus RTU master functionality on the serial side
- Easy 6-step visual configuration wizard within the Anybus Configuration Manager software



### Communicator RS232/422/485

- Protocol converters that offer flexible serial frame building
- Connectivity to 13 different networks
- Supports ASCII or vendor-specific protocols
- For Request/Response or Produce/Consume protocols



### Communicator CAN

- Protocol converters with flexible CAN frame building
- Connectivity to 11 different networks
- For devices with CAN 2.0A and B based protocols
- Included dual port switch in Ethernet versions eliminates the need for external switches



### Communicator DF1

- Protocol converters for devices with Rockwell DF1
- Connectivity to 13 different networks
- Includes an easy visual DF1 configuration method
- Supports PLC5/SLC500, Guard and many more

**No other company has standard solutions available to return data from a very mixed set of equipment.**

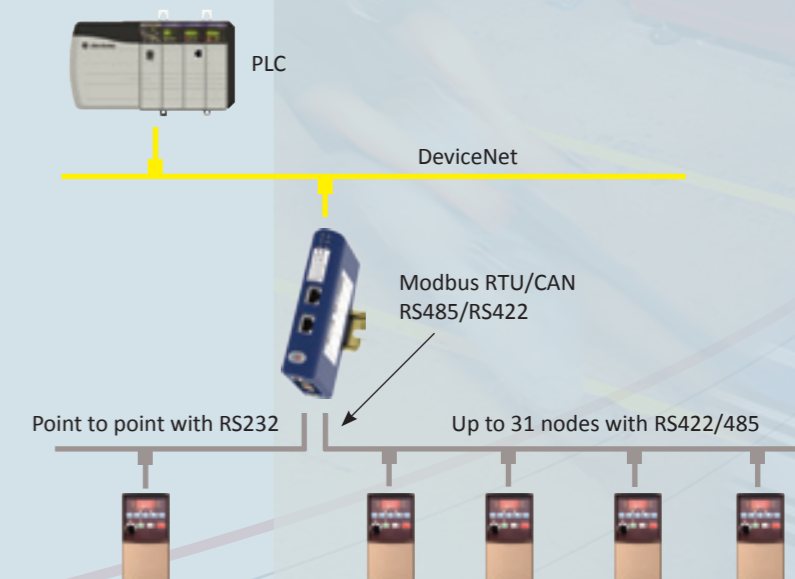
*Alexis Ducancel  
Genzyme, France*

**We wanted something that was solid and easy to use. The Anybus Communicator CAN was just that.**

*Tomas Holmquist,  
Berg Propulsion, Sweden*



#### Example: Single and multi-drop connectivity to DeviceNet



# **Anybus® - Use case examples**

## Proven and trusted by the world's leading industrial companies

### “These things just have to work”

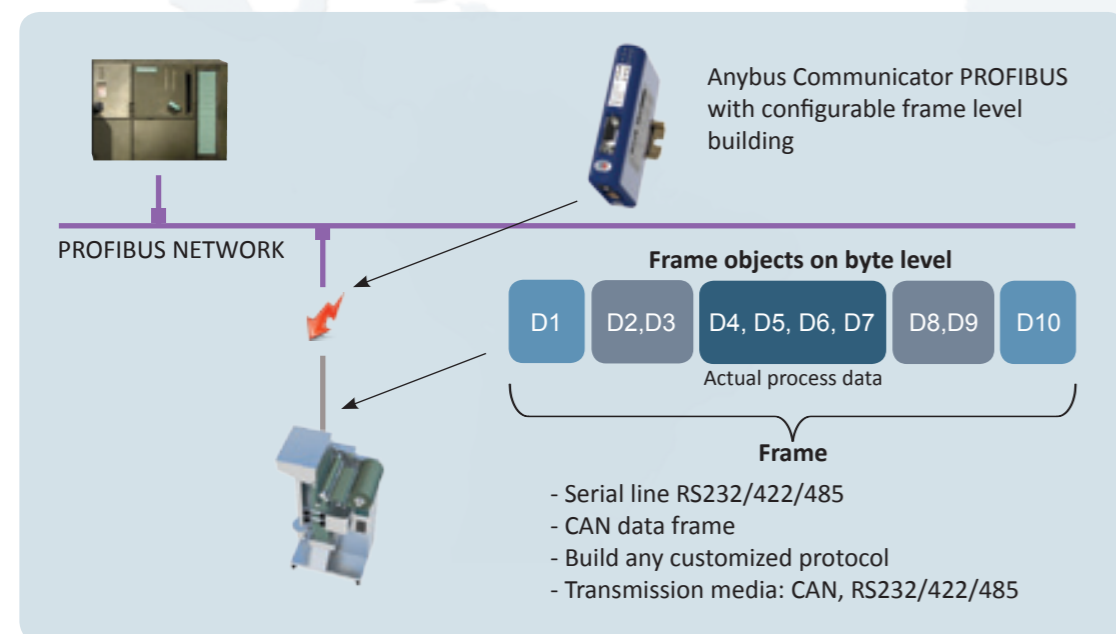
Anybus technology gives network access to more than two million devices all around the world. It is used by industrial giants such as ABB, Bosch, Mitsubishi, Siemens, Schneider Electric and Rockwell Automation and incorporates technology from the network founders. This ensures that you get a fast and reliable communication link that will last a long time.

Anybus gateways are high-quality products which come with 3-year guarantees. In addition, HMS offers free and global technical support.



### Technical example: Proprietary custom protocols

Communicator solution based on byte and frame level configuration for devices with proprietary custom protocols on CAN or serial line RS232/422/485.



### System integration made easy for Chinese subway

The Guangzhou Metro Line 5 in China spans 40 kilometers, east to west through Guangzhou City. The subway's “BAS System” connects



a substantial amount of monitoring devices and sub-systems for ventilation, air conditioning, water supply, drainage, elevators etc. Since many of these devices and subsystems are based on different protocols, Guangzhou Metro needed to find a solution to allow communication between these different devices and the BAS system.

“Anybus Gateways do not require programming and can be configured to use a uniform method to access subsystems; thereby saving us a great deal of time in the project implementation stage,” says Zhao Feng, project manager for the implementation.

## Communicator

### Connecting robots

C.I.A. Automation and Robotics in Italy has extensive experience in the field of system integration, especially when it comes to



robotics. As most of C.I.A Automation and Robotics applications are specific, they have to interface different kinds of devices in their automation systems that use different communication protocols. They have chosen HMS's Anybus X-gateway which enables them to connect to any industrial network easily.

“HMS products are particularly comprehensive and can be used to interface different kinds of machines, even pre-existing machinery,” say Angelo Galimberti, Director of C.I.A. Automation and Robotics.

## X-gateway



### HMS Partner Program

The global HMS partner program covers system partners that provide solutions and services around Anybus gateways.

To find a system partner or to join, visit [www.anybus.com/partner](http://www.anybus.com/partner)

“HMS takes full responsibility for the entire supply chain including manufacturing and delivery. With our focus on quality and a widespread international distribution network, you can rest assured that you get solid connectivity solutions on time.

We currently have an on-time delivery rate above 98 %. Field returns are less than 0,02 %. These are good numbers, but we always aim to improve.

Katarina Lekander  
Quality Manager



## HMS Industrial Networks

Through Anybus® technology, HMS Industrial Networks provides reliable solutions to connect devices to any major industrial network. Anybus is a globally recognized brand, offering customers a competitive advantage in all types of applications. HMS' knowledgeable staff along with distributors and partners in over 50 countries worldwide, are there to help you and your business increase productivity and performance while lowering cost and time to market.



[www.anybus.com](http://www.anybus.com)

### HMS Industrial Networks - worldwide

#### HMS - Sweden (HQ)

Tel: +46 35 17 29 00 (Halmstad HQ)  
Tel: +46 35 17 29 24 (Västerås office)  
E-mail: [sales@hms-networks.com](mailto:sales@hms-networks.com)

#### HMS - France

Tel: +33 368 368 034  
E-mail: [fr-sales@hms-networks.com](mailto:fr-sales@hms-networks.com)

#### HMS - Italy

Tel: +39 039 59662 27  
E-mail: [it-sales@hms-networks.com](mailto:it-sales@hms-networks.com)

#### HMS - United States

Tel: +1 312 829 0601  
E-mail: [us-sales@hms-networks.com](mailto:us-sales@hms-networks.com)

#### HMS - China

Tel: +86 (0)10 8532 3183  
E-mail: [cn-sales@hms-networks.com](mailto:cn-sales@hms-networks.com)

#### HMS - Germany

Tel: +49 721 989777-000  
E-mail: [ge-sales@hms-networks.com](mailto:ge-sales@hms-networks.com)

#### HMS - Japan

Tel: +81 45 478 5340  
E-mail: [jp-sales@hms-networks.com](mailto:jp-sales@hms-networks.com)

#### HMS - Denmark

Tel: +45 35 38 29 00  
E-mail: [dk-sales@hms-networks.com](mailto:dk-sales@hms-networks.com)

#### HMS - India

Tel: +91 20 40111201  
E-mail: [in-sales@hms-networks.com](mailto:in-sales@hms-networks.com)

#### HMS - UK

Tel: +44 1926 405599  
E-mail: [uk-sales@hms-networks.com](mailto:uk-sales@hms-networks.com)

Find your nearest distributor/partner:  
[www.anybus.com/contact](http://www.anybus.com/contact)

