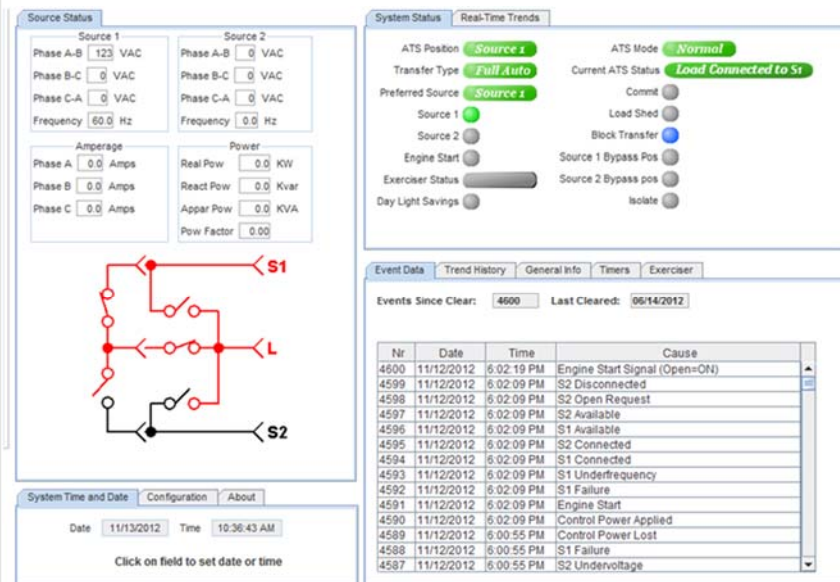


Product Overview

DT Webserver Gateway

The DT Webserver Gateway provides a local and remote Web based window into your Industrial equipment. The Gateway supports standard Modbus RTU and Modbus TCP/IP communications and can interface to any plant equipment that supports these standard protocols. The Gateway optionally can support other networks such as Ethernet IP, Profibus, Profinet, EtherCat, CANOpen, DeviceNet and others. The Gateway provides the tools plant floor personnel need to maintain and support equipment either onsite or remotely. Support for standard browsers such as Chrome, IE, or Firefox allows the DT Webserver Gateway to provide managerial personnel with key data

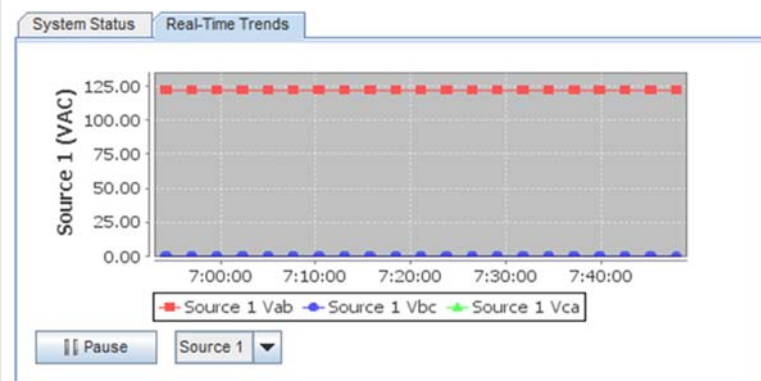


allowing them to make more intelligent process decisions. The Gateway provides various features including web based graphical display of key data points, Real Time trending, 30 day Historical trending, Event display, Email

Event Data				
Events Since Clear: 3610 Last Cleared: 06/14/2012				
Nr	Date	Time	Cause	
3430	11/22/2012	06:40:11 AM	S2 Close Request	
3431	11/22/2012	06:40:11 AM	S2 Connected	
3432	11/22/2012	1:32:35 PM	Alternate Source Fail to Start	
3433	11/22/2012	1:32:35 PM	S2 Underfrequency	
3434	11/22/2012	1:32:35 PM	S2 Open Request	
3435	11/22/2012	1:35:10 PM	Center Off Position	
3436	11/22/2012	1:35:10 PM	S2 Disconnected	
3437	11/22/2012	1:35:10 PM	S2 Available	
3438	11/22/2012	1:35:14 PM	S1 Close Request	
3439	11/22/2012	1:35:14 PM	S1 Connected	
3440	11/22/2012	1:35:14 PM	Xfer to Alternate Source	
3441	11/22/2012	1:35:14 PM	Transfer Alert to S2	
3442	11/22/2012	2:28:47 PM	S1 Open Request	
3443	11/22/2012	2:28:47 PM	S1 Disconnected	

notifications, and built in FTP server.

Depending on the equipment the gateway is interfaced to the gateway can also be designed to control or provide routine testing of plant equipment. A system level username and password is also a standard feature of the DT Webserver Gateway. This feature can be used to allow or disallow the access to various aspects of the system and allow configuration of the system.



Lastly the gateway supports a pass through feature which allows other plant floor equipment access to the Modbus RTU side of the gateway. This can be used for instance to also allow SCADA systems or Building Management Systems to directly access an ATS or a machine which is connected to the DT Webserver Gateway.

Applications

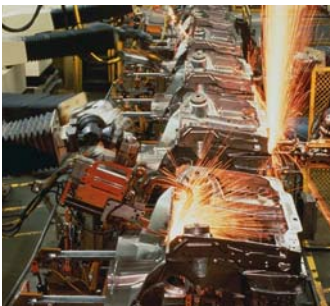
The DTWG is perfectly suited for Industrial applications, such as backup power generation systems, packaging machines, water and waste water system monitoring, gas and oil well monitoring, building management system monitoring, and other industrial plant equipment data collection. Onboard data collection in CSV file format and access over FTP allows better understanding, operation, support, and maintenance of plant floor equipment.

Technical Specifications

- Operating Temperature 0 Deg C to 70 Deg C.
- Input Voltage
9 – 40 VDC (24 VDC Nominal).
- Input Current
300 mA max, (100 mA typ. (@24VDC)
- RoHS compliant
- UL 508 Listed
- 2 RS485 Modbus Communications Ports
- 1 RS422 Modbus Communications Port
- 1 Ethernet HTTP and Modbus TCP/IP Port
- Baud Rate: 9600 to 384k Configurable
- C User Programmable
- Diagnostics Interface
- Optional Fieldbus Network Port Support for

Profibus	Profinet	BACnet IP
Ethernet/IP	CANopen	DeviceNet
Modbus-TCP	Modbus-RTU	Bluetooth
EtherCat	CC-Link	
ControlNet	BACnet MSTP	
- Metal Din Rail Mountable Enclosure
- Power and Status LED indication
- HTTP, SNMP, SMTP, FTP
- Historical and Real Time Trending
- On Board File storage system
- Email Alerts, Event Display
- XML User configuration
- System Level Username and Password
- Gateway Message Pass Through

Company Information



Diamond Technologies provides solutions to your Business's Automation, Data Collection, Industrial Networking, and Remote Management challenges. Our customer base includes companies in many diverse industries and applications including semiconductor processing, warehouse and distribution, electrical power equipment manufacturers, discrete parts manufacturing, packaging systems, medical and biomedical equipment manufacturers, pharmaceutical applications, weigh scale manufacturers, electrical power suppliers, automatically guided vehicles and robotics, industrial manufacturers of consumer products, and government.

We pride ourselves on our industry knowledge and bringing innovative ideas to our customer base.

Specialized Engineering Services



Diamond Technologies has the flexibility to modify our core products or technologies to meet your specific product or project requirements. Whether you have mechanical constraints, need modifications to communication protocols, or require added or modified I/O capabilities, **Diamond Technologies** can work with your engineering team to accomplish your goals. For nearly 20 years Diamond has provided Specialized Engineering to ensure the final solution achieves our customers' requirements.

We have expertise in Data Collection, Remote Management, Industrial Networking and Automation systems. We can provide electronics hardware design, firmware development, industrial network communication protocols, and PC and mobile application development. We have worked with most major industrial wired and wireless networks.