

Graphic HMIs

4.3", 7.0", 10.0", 10.4", 12.1" & 15.0"

Touchscreen Human Machine Interface

*An HMI for
Every Application*



New - HMI5000HD
Virtual HMI



Specialists in HMI Technology

For the Best Value in HMIs

The HMI5000 Line of Touchscreen Operator Interfaces comes in 12 different models with a wide variety of features to meet every automation need. Rugged, corrosion-resistant components, high-quality LED-backlit touchscreen displays from 4.3" - 15", and industrial-grade construction ensure optimal performance in the most demanding automation environments. External ports extend the capabilities of the HMI to connect an external mouse/keyboard, audio, or flash drive for data-logging. The EZware configuration software simplifies the task of creating custom screens for the operator interface to fit each application.

Display Sizes for Any Application



Vivid Displays

The displays of the HMI5000 Series use the latest trends in LCD technology. This allows us to provide industrial-grade, long-lasting screens that are clear, bright and have more color diversity than ever before. New sizes and wide-screen resolution also provide maximum screen space.

- **Built-in responsive touchscreen**
- **High resolution - up to 1024 x 768**
- **Wide viewing angles**
- **Bright (up to 500 nits)**
- **Fast refresh rates**
- **Up to 16.2M colors**
- **Long life LED backlight**
- **Intuitive Easy-to-Use Software**
- **Extensive Communications**
- **Remote Connectivity**

Remote Connectivity



Extend Your HMI Link with Ease

VNC (Virtual Network Computing) makes it possible to view or control an HMI from a remote computer with an Internet connection. The HMI5000 line includes a VNC-compatible server* —

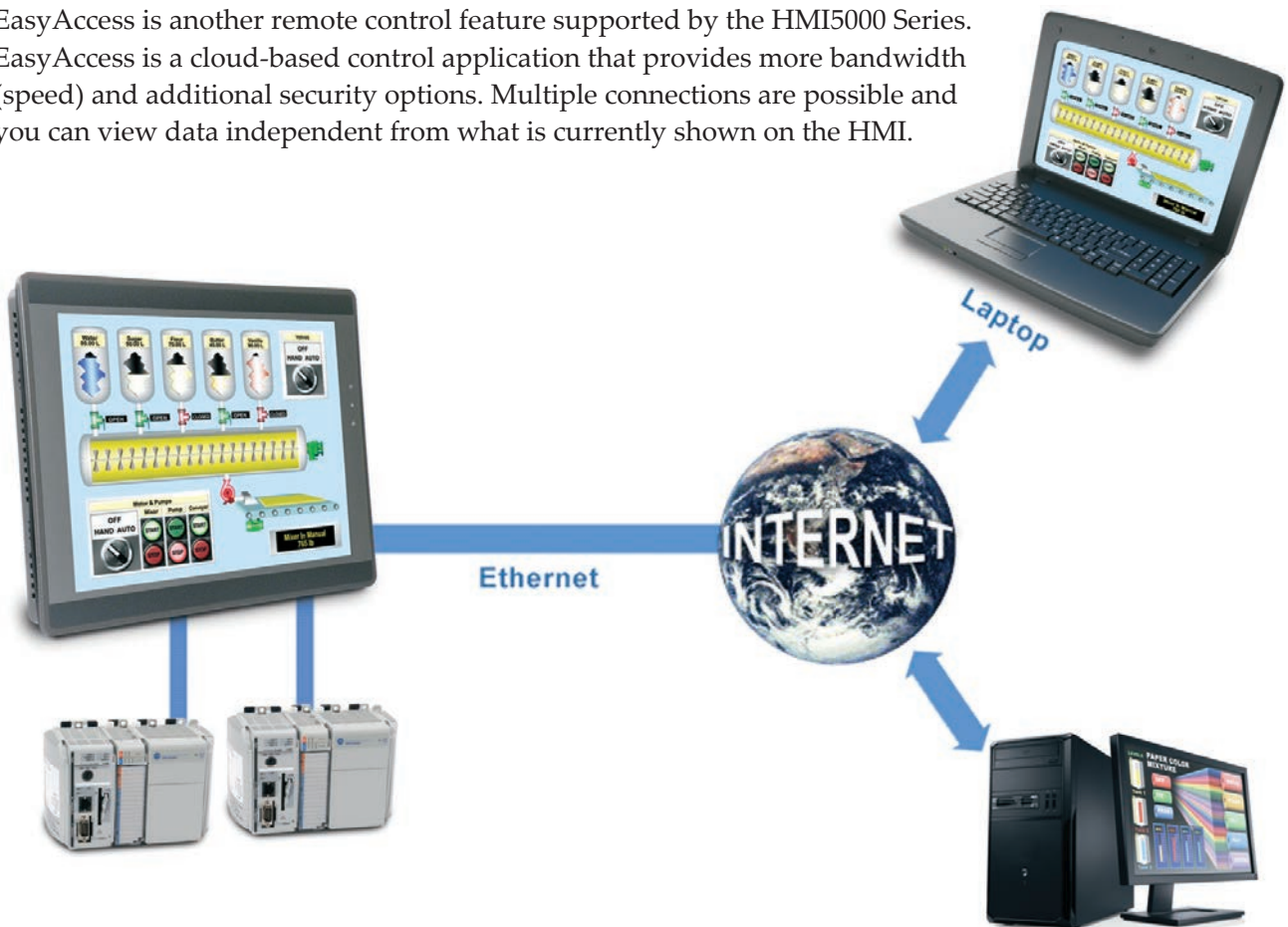
all you need is a VNC viewer. With VNC, you can see exactly what is displayed on the HMI from a remote location, such as a smartphone.



*HMI5000L/HD models do not currently support VNC.

Easy Access

EasyAccess is another remote control feature supported by the HMI5000 Series. EasyAccess is a cloud-based control application that provides more bandwidth (speed) and additional security options. Multiple connections are possible and you can view data independent from what is currently shown on the HMI.



Superb Quality & Features

A Wide Variety of HMI Solutions



HMI5000P Series – Top-tier Human Machine Interface with enhanced features

The HMI5000P, our top-of-the-line Graphic Operator Interface, features next-generation CPUs, ample memory, and a crisp high resolution display. These touchscreen interfaces come in three sizes (7", 12", and 15") and are encased in anti-corrosive aluminum enclosures for added strength and durability. The HMI5000P can connect to a myriad of other devices and PLCs through built-in USB, serial and ethernet ports. In addition, the 12" HMI5121P and 15" HMI5150P come with two video inputs, and the 7" HMI5070P supports extended operating temperature ranges, making the HMI5000P Series your ultimate HMI solution.



HMI5000N/T/NH/TH – The perfect balance of price and productivity.

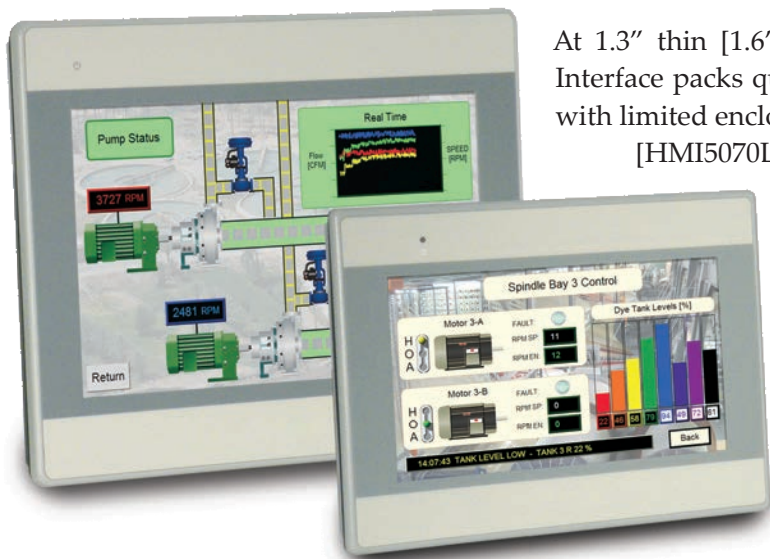
Available in 4.3", 7" and 10" display sizes, the HMI5000N/T/TH/NH Series is a family of powerful mid-range HMIs with an optional Ethernet port in every display size. In addition to connecting to PLCs that support Ethernet, this feature lets you update the HMI or monitor your system from a remote location. Multiple serial ports on each model allow connection to different PLCs.

Note: Models 'N' and 'NH' do not have Ethernet

**Value ... Performance ... Personalized Solutions ...
From the Operator Interface Specialist**

New - Sleek HMI5000L Series Graphic HMIs

HMI5000L – A sleek new look in an ultra-slim form factor



At 1.3" thin [1.6" on the 10" model], this slim-line Machine Interface packs quite a punch and is optimal for environments with limited enclosure space. The HMI5000L Series comes in 7" [HMI5070L] and 10" [HMI5100L] display sizes with a grey, impact-resistant enclosure that offers a more contemporary look.

New - HMI5000HD *Virtual HMI*

Exciting new concept in operator interface technology!

Compact, powerful HMI that turns any HDMI-Compatible display into a machine interface. It supports 1280x720 pixel resolution, and is best suited for applications requiring a large display. Critical processes can be monitored by plant personnel using a wall-mount display easily visible from any location.

The HMI5000HD is light, compact and can be mounted onto a DIN rail, allowing it to share space with your PLC. Ethernet connectivity and three serial ports. Compatible with a wide variety of PLCs.

Create your own *Command & Control Center* by linking several HMI5000HDs to multiple hi-res LCD displays.



Talk with a Sales Engineer Today: 425.745.3229

Every Machine Needs The Human Touch

Superior Hardware Functionality

HMI5000P Series

The next generation of HMI models includes a faster processor and more memory to increase usability. The HMI5000P Series connects to a wide variety of supporting hardware, providing you with more options to best suit your application.

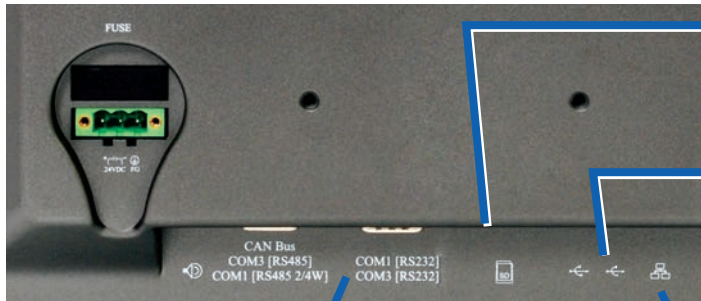
Whether the demands of your installation require external accessories, data storage, networking, or simply reliable local control, these HMIs can meet the challenge.

The HMI displays come in three sizes (7", 12", and 15"). Housed in rugged aluminum enclosures adding strength and durability.



Protected Power

Galvanic isolation protects the internal circuitry.



SD Card Slot

Convenient data storage solution.

USB Ports

Fast USB 2.0 for Data Storage and connection to peripheral devices - keyboard, mouse, printer, etc.

Serial Ports

Enable connection to multiple PLCs using different drivers. CAN Bus, RS485 2/4W, and RS232.

Ethernet

Real-time Video Monitoring

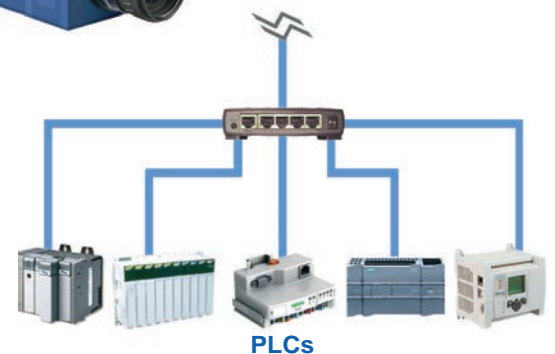
The HMI5000P 12" and 15" models support two video inputs. Now you can connect video cameras to provide visual feedback of the plant floor.

- *Record and play live screen shots*
- *Playback how-to videos*
- *Fully functional play, stop, rewind, fast-forward*
- *Capture and store up to one screen per second*



Ethernet

Ethernet is available on most HMI models, giving you the option to connect to Ethernet-supported PLCs.

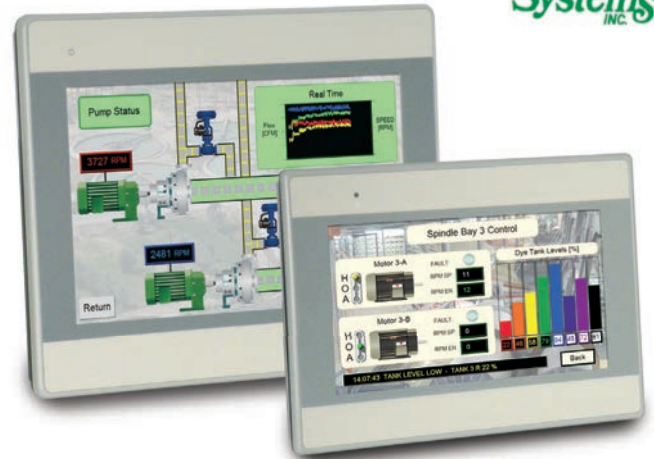


New Models with a Fresh Look

Sleek and slim design, robust processing power, ample memory, multiple communication ports, and an easy to use configuration package – The HMI5000L Series brings an affordable addition to the Maple Systems' HMI family of products.

Protected Power

Galvanic isolation protects the internal circuitry from potential damage. The power input is electrically separated with an isolation transformer while all serial inputs use opto-isolators.



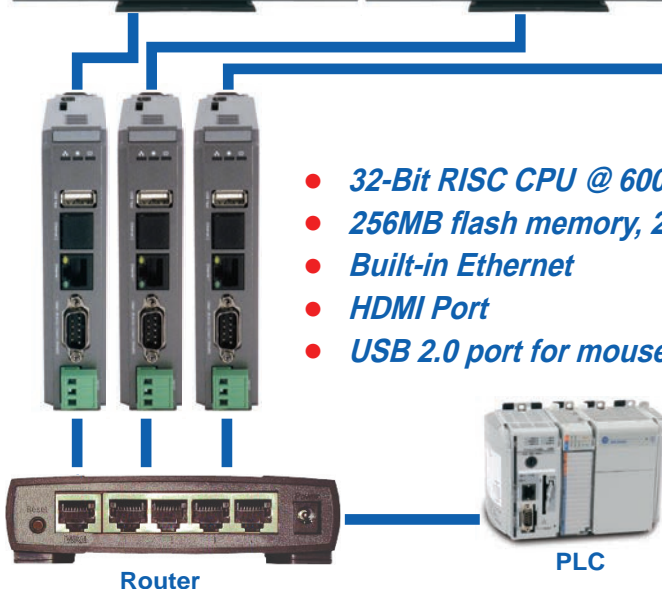
HMI5000HD *Virtual HMI*

Turn any HDMI-Compatible display into a machine interface. Use more than one unit to create a control center - displaying more than one control screen at a time.



DIN rail or wall mount

- **32-Bit RISC CPU @ 600MHz**
- **256MB flash memory, 256MB RAM**
- **Built-in Ethernet**
- **HDMI Port**
- **USB 2.0 port for mouse/keyboard**
- **3 serial ports**
- **SD card slot**
- **Isolated power supply**
- **Two year warranty**



Easy-to-use Software



EZware is our powerful and easy-to-use configuration software for the HMI5000 Series Graphic HMIs.

4 Simple Steps

- *Select HMI and PLC drivers*
- *Pick and place objects*
- *Test and simulate*
- *Download to target HMI*

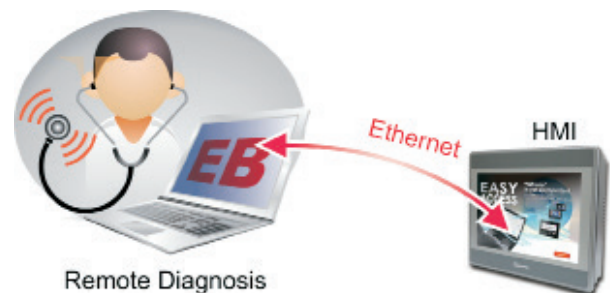


Wide Selection of Custom Objects

- *Create advanced batch recipes*
- *Email alarm notification*
- *Create trends, meters, bar graphs*
- *Multi-language feature*

Programming Tools

- *Easily build and resize entire projects*
- *Import/export PLC tags database*
- *Display and monitor watch values*
- *Diagnose communications errors*



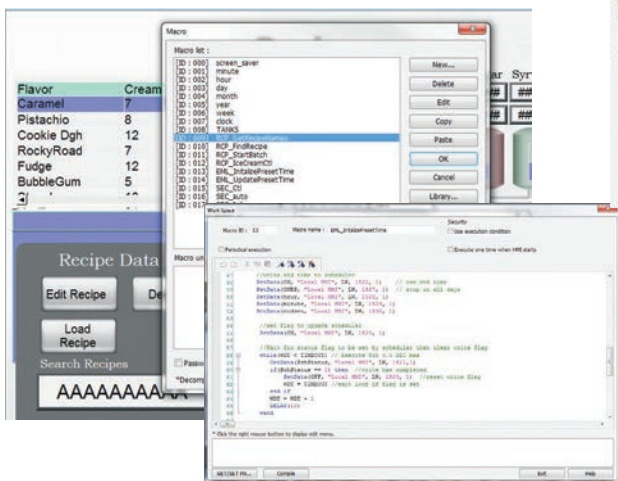
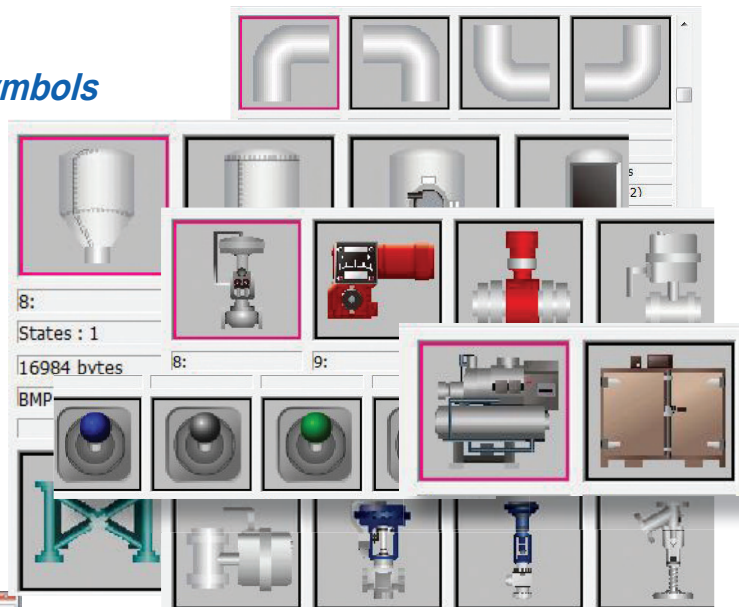
Enhance Security

- *Restrict screen access*
- *Create user accounts*
- *Protect HMI with USB security key*
- *Add/delete accounts during runtime*

EZware provides you with a versatile collection of development tools, objects and features.

Extensive Graphics Libraries

- *Over 3000 industrial images and symbols*
- *Create custom graphics*
- *Employ animated effects*
- *Group related objects*

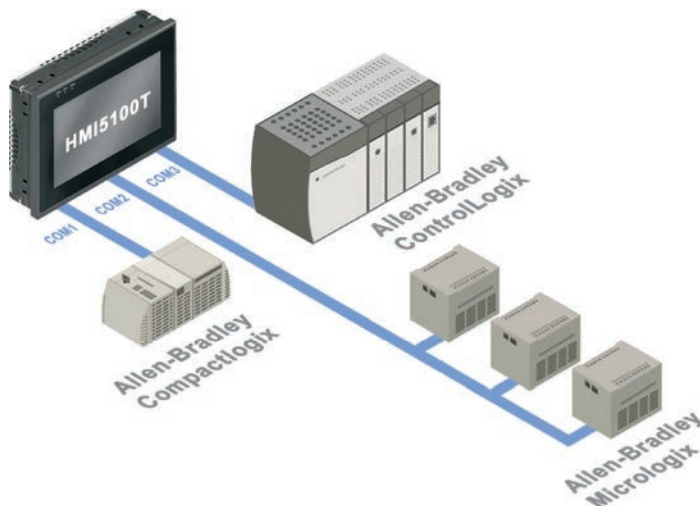


Powerful Macro Language

- *Combines elements of C and Basic*
- *Create your own custom serial driver*
- *Execute up to 256 macros*
- *Trigger-based or by touchscreen*

Data Logging and Monitoring

- *Capture important data*
- *Store for later viewing*
- *View as trend graphs or data table*
- *Send data to remote server*



Support for Allen-Bradley

Maple Systems provides total support for Allen-Bradley PLCs — whether through an Ethernet or serial connection. Drivers for EtherNet/IP-DF1, Ethernet/IP-CIP, DF1 serial, and DH485 are readily available. The EZware software can also import tags from an Allen-Bradley RSLogix™ project.

Specifications






Part Number		HMI5043N/T	HMI5070NH/TH	HMI5070L	HMI5070P	HMI5100N/T
Display w/ Touchscreen		4.3" TFT	7.0" TFT	7.0" TFT	7.0" TFT	10.0" TFT
Resolution / Pixels		480 x 272	800 x 480			
Max Colors		65K			16.7M	65K
Brightness (cd/m ²)		500	375	350	500	300
Contrast Ratio		600:1	500:1			
Microprocessor (32-bit RISC)		400MHz		600MHz	600MHz	400MHz
Memory	Flash	128MB		128MB	256MB	128MB
	DRAM	64MB		128MB	256MB	64MB
USB Ports	Host	No	Yes			
	Client	Yes (N) / No (T)	Yes	No	Yes	Yes
Ethernet		No (N) / Yes (T)	No (NH) / Yes (TH)	Yes	Yes	No (N) / Yes (T)
Serial Ports		2	3	2	2	3
SD Card Slot		No	No (NH) / Yes (TH)	No	Yes	
Video		No				
RTC		No	Yes			
Audio Jack		No	No (NH) / Yes (TH)	No	Yes	No (N) / Yes (T)
Operating Temperature		32 ~ 122°F (0~50°C)			-4 ~ 122°F (-20~50°C)	32 ~ 122°F (0~50°C)
Power Requirements		24VDC, 250mA		24VDC, 350mA	24VDC, 400mA	24VDC, 300mA
Dimensions (W x H x D inches)		5.04 x 4.02 x 1.50	7.88 x 5.76 x 1.67	7.89 x 5.76 x 1.34	7.88 x 5.76 x 1.67	10.67 x 8.38 x 1.96
Enclosure		Molded Plastic			Aluminum	Molded Plastic
Certifications						
Protection		IP65 (NEMA4)				

* Specifications subject to change without notice. Configuration software sold separately.

** HMI5070NH and HMI5100NH are not UL certified.



HMI5100L	HMI5104TH	HMI5121P	HMI5150P	HMI5000HD
10.0" TFT	10.4" TFT	12.1" TFT	15.0" TFT	HDMI Out
	800 x 600	1024 x 768		1280 x 720
65K		16.2M		Based on display
300	300	500	350	Based on display
		700:1		Based on display
600MHz	400MHz	800MHz		600MHz
128MB	128MB	256MB		256MB
128MB	64MB	256MB		256MB
		Yes		Yes
No		Yes		No
		Yes		Yes
2	3	2		3
No		Yes		Yes
No	No	Yes		No
Yes		Yes		Yes
No		Yes		No
		32 ~ 122°F (0~50°C)		4 ~ 131 °F (-20~55°C)
24VDC, 400mA	24VDC, 400mA	24VDC, 850mA	24VDC, 900mA	24VDC, 230mA
10.67 x 8.38 x 1.57	11.27 x 8.38 x 1.97	12.49 x 9.61 x 1.82	14.41 x 11.54 x 2.24	5.12 x 4.53 x 1.06
Molded Plastic		Aluminum		Molded Plastic
				
IP65 (NEMA4)				Not Rated



Every Machine Needs The Human Touch

Maple Systems – A Company You Can Trust



For 30 years, Maple Systems has been a quality-driven leader in the industrial operator interface marketplace. Our primary emphasis is to provide operator interface solutions at an affordable price to the full range of industrial, OEM, and

municipal applications. We have a network of distributors extending across the globe.

We place our full energy into creating and maintaining long term business relationships — delivering outstanding support on all levels.

We take pride in providing superior product training, customer application assistance, and the software and hardware services required to apply our products successfully.

Contact Maple Systems for a HMI5000 Demonstration

For more details about the HMI5000 Series or other Maple Systems' products, please visit our website. There you will find a wealth of materials that describe the features available in the HMI5000 Series. Download product manuals, training videos, application examples, and demo software as well as pricing information. You can also call or email our technical support engineers who are happy to assist you. Contact one of our distributors or our professional sales engineers for information regarding quantity discount pricing.

Or Learn About Our Other Products:

Panel PCs



Open HMIs



Graphic HMCs



Alphanumeric OITs



Talk with a Sales Engineer Today: 425.745.3229

Maple Systems Inc. • 808 134th St. SW, Ste 120, Everett, WA 98204 • Ph: 425.745.3229 • Fax: 425.745.3429